

Semester 1/2024
(August 13 – December 2, 2024)

EG358

Young Adult Literature

COURSE DESCRIPTION:

Critical analysis of English in Young Adult Literature with an emphasis on novels; exploration of issues and themes prevalent in such literature and its effects on the conceptual development of the readers

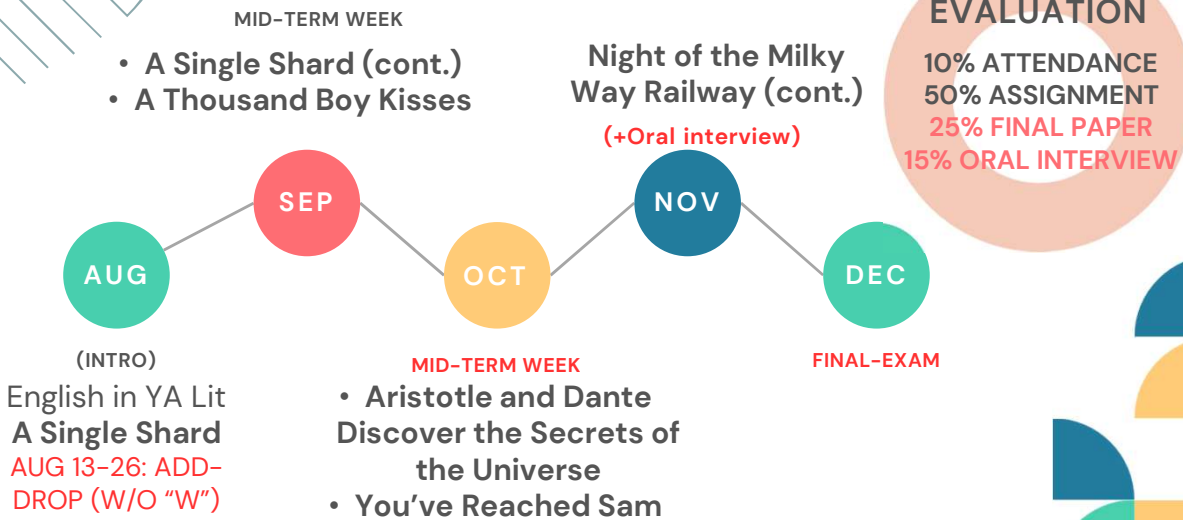
PROGRAM LEARNING OUTCOMES (PLOS)

- PLO 2 Communicate in English effectively
- PLO 3 Apply English knowledge and skills in communication and profession

COURSE LEARNING OUTCOMES (CLOS)

- CLO1 Understand a broad range of literature for young adults (PLO2, PLO3)
- CLO2 Understand diverse cultural perspectives presented through a variety of genres and topics in young adult literature (PLO2, PLO3)
- CLO3 Demonstrate works according to given themes (PLO2, PLO3)
- CLO4 Apply knowledge of contemporary cultural issues to discuss and produce works in English (PLO2, PLO3)

TEACHING & EVALUATION PLAN



01 - LATENESS

Be on time. Two instances of arriving late (more than 15 mins) count as one absence.

02 - ABSENCE

1. Four absences automatically disqualify you from class, resulting in an F.
2. The instructors are not required to make up any exams or activities that occur on the day students are absent from class. An exception is made for the student who is absent from illness with a medical certificate.

03 - PLAGIARISM

The Honor Code requires that work you turn in for assessment is the product of your own individual synthesis or integration of ideas. Plagiarism means copying or paraphrasing someone else's ideas or words and presenting them as your own without proper attribution of the sources, including those from the Internet. Other forms of dishonesty or cheating, such as using your work from one course to resubmit in another course are also forbidden. Any students caught plagiarizing or committing other forms of cheating will receive an F on that assignment, regardless of any explanation.

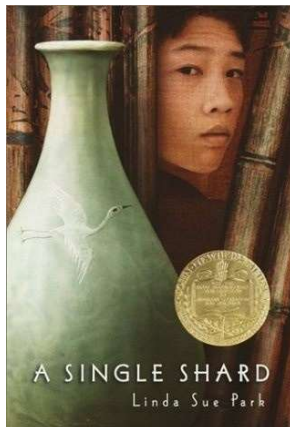
GRADING CRITERIA

A	=	85% and above
B+	=	80% - 84.99%
B	=	75% - 79.99%
C+	=	70% - 74.99%
C	=	60% - 69.99%
D+	=	55% - 59.99%
D	=	50% - 54.99%

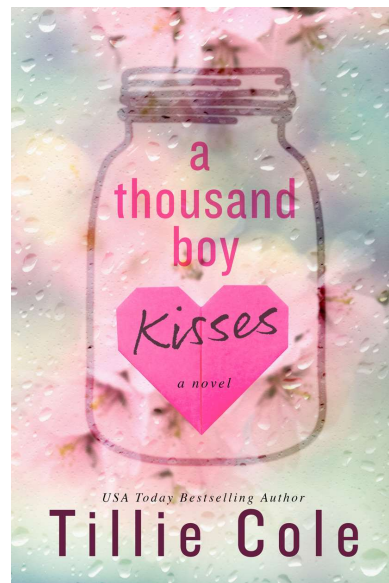
F = 49.99% and below

BEFORE MIDTERM

MAIN TEXTS

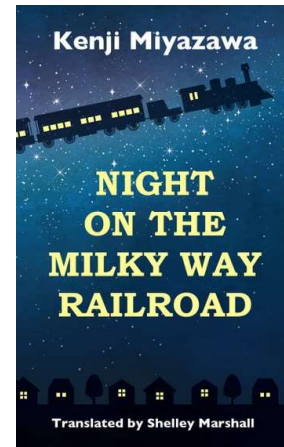
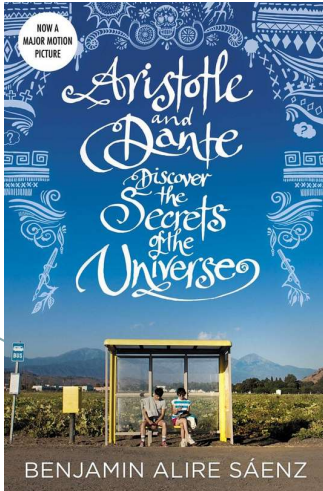


PDF AVAILABLE



AFTER MIDTERM

MAIN TEXTS



PDF AVAILABLE

SLIDES

<https://www.maia-antarasena.com/>

select

“course”

edited one/s available 1-2 days after lecture

select “EG358”



CONTACT

by appointment*
or
email: [dr\(dot\)maia@maia-antarasena.com](mailto:dr(dot)maia@maia-antarasena.com)*
*business hours (M-F: 8.30 AM - 4.30 PM)



THANK YOU

Any Questions?